

SKF 728619 E



Instructions for use

Bedienungsanleitung | Instrucciones de uso | Mode d'emploi | Manuale d'istruzioni | Instruções de uso
 Инструкция по эксплуатации | 使用说明书 | Ръководство за употреба | Návod k použití | Betjeningsvejledning
 Οδηγίες χρήσης | Kasutusjuhend | Käyttöohjeet | Upute za korisnike | Használati útmutató | Naudojimo instrukcija
 Lietošanas instrukcija | Gebruiksaanwijzing | Instruksjoner for bruk | Instrukcja obsługi | Instrucțiuni de utilizare
 Návod na používanie | Navodila za uporabo | Bruksanvisning | Kullanma talimatları

EN	English	2
DE	Deutsch	9
ES	Español	16
FR	Français	23
IT	Italiano	30
PT	Português	37
RU	Русский	44
ZH	中文	51
BG	Български	58
CS	Čeština	65
DA	Dansk	72
EL	Ελληνικά	79
ET	Eesti keel	86
FI	Suomi	93
HR	Hrvatski	100
HU	Magyarul	107
LT	Lietuviškai	114
LV	Latviešu	121
NL	Nederlands	128
NO	Norsk	135
PL	Polski	142
RO	Română	149
SK	Slovenčina	156
SL	Slovenščina	163
SV	Svenska	170
TR	Türkçe	177

Table of contents

Safety precautions 3

EC Declaration of conformity 3

1. Description 4

2. Technical data..... 5

3. Operating instructions 6

4. Maintenance 7

 4.1 Filling the oil container7

 4.2 Cleanliness.....7

 4.3 Replacement parts8



READ THIS FIRST Safety precautions

Read this instruction for use fully. Follow all safety precautions to avoid personal injury or property damage during equipment operation. SKF cannot be responsible for damage or injury resulting from unsafe product use, lack of maintenance or incorrect equipment operation. In case of any uncertainties as regards the use of the equipment contact SKF.

Failure to comply with the following could cause equipment damage and personal injury.

- Do ensure that the equipment is only operated by trained personnel.
 - Do wear proper personal protective gear, such as eye protection and protective gloves, when operating the equipment.
 - Do inspect the equipment and all accessories carefully before use.
 - Do not use damaged components or modify the equipment.
 - Do use clean recommended hydraulic oils (SKF LHM 300, LHMF 900 or similar).
 - Do not use glycerin or water based fluids as a pressure medium. Premature equipment wear or damage can result.
 - Do not use the equipment above the stated maximum hydraulic pressure.
 - Do not adjust safety valves to work at pressures above the maximum working pressure.
 - Do not extend the handle in order to reduce the required force to reach maximum pressure. Use hand pressure only.
 - Do not use the pumps with accessories, which are rated below the maximum working pressure of the pump.
 - Do use a pressure gauge to monitor the oil outlet pressure.
 - Do ensure that all the air has been removed from the hydraulic system before pressurising the hydraulic system.
 - Do prevent the workpiece (e.g. bearing, gearwheel or similar item) from being forcibly ejected upon sudden release of pressure (e.g. by use of retaining nut).
- Do not use damaged hoses. Avoid sharp bends and kinks when connecting hoses. Sharp bends and kinks will internally damage the hose leading to premature failure. Applying pressure to a damaged hose may cause it to rupture.
 - Do not lift the equipment by the hoses or couplings.
 - Do follow local safety regulations.
 - Do service the equipment by a qualified hydraulic technician or SKF Repair Centre.
 - Do replace worn or damaged parts with genuine SKF parts.

EC Declaration of conformity

We, SKF Maintenance Products, Meidoornkade 14, 3992 AE Houten, The Netherlands herewith declare under our sole responsibility that the products described in these instructions for use, are in accordance with the conditions of the following Directive(s):
MACHINERY DIRECTIVE 2006/42/EC
and are in conformity with the following standards:
EN-ISO 12100:2010, EN-ISO 4413

Houten, The Netherlands, October 2019



Mrs. Andrea Gondová
Manager Quality and Compliance

1. Description

The 728619 E is a two stage pump. The pump supplies a high rate of flow (20 cm^3 per stroke) below the switching pressure. Above the switching pressure the flow is automatically decreased to 1 cm^3 per stroke.

A 3 metre long high-pressure hose is supplied to connect the pump to the workpiece. One end of the hose has a quick-connection coupling for the connection to the pump. The other end of the hose has a G $\frac{1}{4}$ " quickconnection nipple for the connection to the workpiece.

The pump comes prefilled with SKF mounting fluid (LHMF 300).

A 1 litre can of mounting fluid is also included.

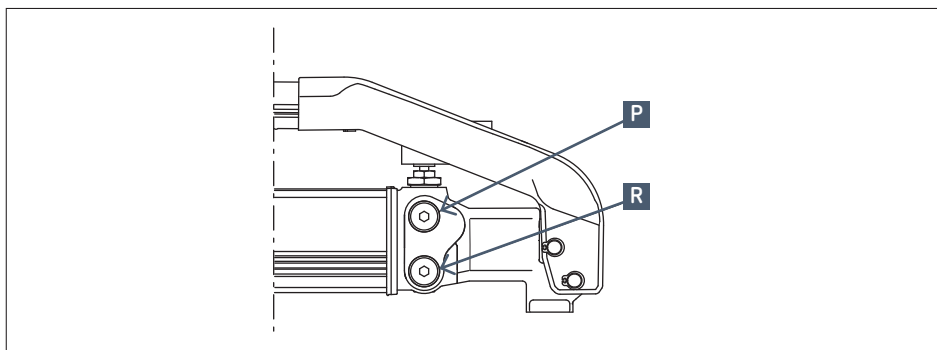
These items are stored in a sturdy metal box.

The pump has an oil outlet connection (P).

The pump also has a return connection (R), to return oil to the oil container.

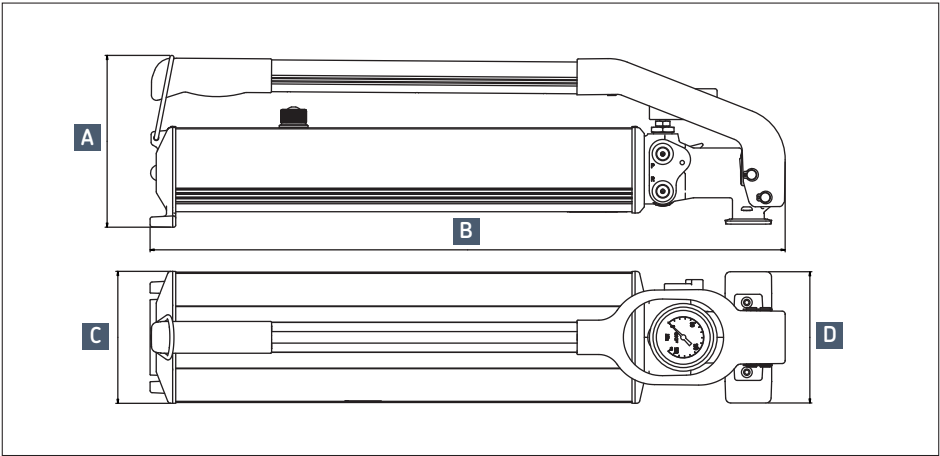
The return connection can be connected to an external oil reservoir when the oil container capacity is not sufficient.

The release valve is in the pump head. The pump includes a safety valve to prevent high pressure that can cause damage to the pump.



2. Technical data

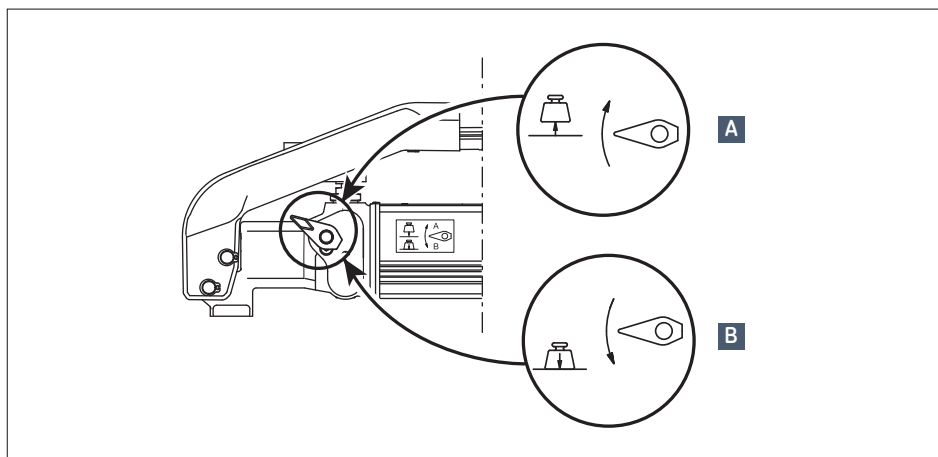
Maximum pressure	150 MPa (21.750 psi)
Volume per stroke	20 cm ³ (1.2 in ³) below 2,5 MPa (362 psi) 1 cm ³ (0.6 in ³) above 2,5 MPa (362 psi)
Oil container capacity	2 400 cm ³ (146.5 in ³)
Pressure hose	3 m (118 in) long with quick connection coupling
Connection nipple	G 3/4" external or internal thread
Oil viscosity, mounting fluid	300 mm ² /s (1 400 SUS) at 20 °C (68 °F)
Weight (filled with oil)	11,4 kg (25 lb)
Handle effort	370 N (83.2 lbf)
Designation	728619 E



Dimension	mm	inch
A	170	6.7
B	620	24.4
C	130	5.1
D	128	5.0

3. Operating instructions

- Remove the container plug under the pump handle to check the oil level.
Make sure there is sufficient oil to complete the operation. Use oil with a viscosity at operating temperature of 300 mm²/s (1 400 SUS) to mount bearings with the SKF Oil Injection Method or a hydraulic nut. Use oil with a viscosity at operating temperature of 900 mm²/s (4 100 SUS) for dismounting bearings.
- Hold the pump in a horizontal position and tilt forward as necessary to make sure the oil supply is constant.
- Screw the quick connection nipple (G 1/4") tightly into the workpiece.
- Connect the hose to the quick connection nipple. To connect or disconnect the hose you must retract the collar on the quick connector. Do not disconnect the hose while the oil is pressurised.
- Move the release valve to the pump position. Do not tighten the valve too much. The release valve is found on the side of the pump.
- Operate the pump until the pressure increases to the level necessary for your application. When the pressure is more than 150 MPa (21 750 psi), the safety valve will open.
- Last, open the release valve to let the oil flow back to the oil container.



- A. Pump
B. Release

4. Maintenance

4.1 Filling the oil container

Set the pump on a flat, level surface to fill the oil container. Remove the plug from the oil container. Fill the oil container until the oil level is at the bottom of the filling pipe. Do not fill the pump above the bottom of the filling pipe. Too much oil in the oil container can cause a malfunction.

Make sure that there is no air in the oil system.

Check for air in the oil system after the oil is replaced and after maintenance to the pump is complete. Operate the pump, and make sure that only air-free oil is supplied from the hose.

Use only clean hydraulic oils such as SKF LHM 300 or LHDF 900.

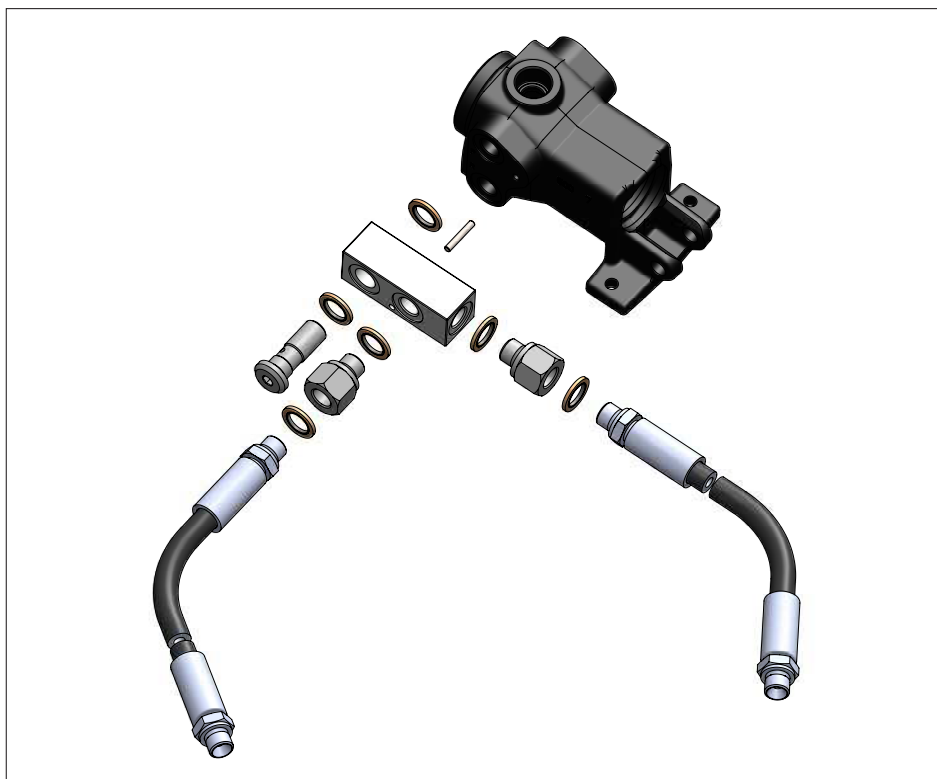
4.2 Cleanliness

Do not let metal particles or other contamination enter the pump or oil.

Contamination will decrease the service life of the pump.

4.3 Replacement parts

Designation	Description
728619 E-1	Pump
728619 E-3	Pressure gauge
728619 E-4	Double outlet adapter
728619 E-7	Repair kit
728619 E-9	Release valve assembly
729831 A	Quick connection coupling
729832 A	Quick connection nipple
729834	High-pressure hose, 3 m long
LHMF 300/5	Mounting Fluid (5 litre, 300 mm ² /s at 20 °C)
LHDF 900/5	Dismounting Fluid (5 litre, 900 mm ² /s at 20 °C)



SKF 728619 E4, Double outlet adapter

The contents of this publication are the copyright of the publisher and may not be reproduced (even extracts) unless prior written permission is granted. Every care has been taken to ensure the accuracy of the information contained in this publication but no liability can be accepted for any loss or damage whether direct, indirect or consequential arising out of the use of the information contained herein

目 录

安全措施..... 52

符合欧盟相关产品条例的声明 52

1. 应用 53

2. 技术参数 54

3. 操作说明 55

4. 保养 56

 4.1 更换液压油..... 56

 4.2 清洁..... 56

 4.3 备件..... 57



请首先阅读本部分 安全措施

请完整阅读本说明。请遵循所有安全措施以避免在设备操作期间发生人身伤害或财产损失。对于产品因未安全使用、缺少维护或设备操作不正确而造成的任何损坏或人身伤害，SKF 不承担任何责任。

在对于设备的使用存在任何不确定因素的情况下，请联系 SKF。

不遵循以下内容可导致设备损坏和人身伤害。

- 务必确保设备仅由经过培训的人员进行操作。
- 操作设备时应佩戴合适保护装备，如：眼罩和防护手套。
- 使用前必须仔细检查设备以及所有附件。
- 请勿使用损坏的组件或改装该设备。
- 使用推荐的液压油（SKF LHM 300、LHDF 900 或类似产品）。
- 请勿使用甘油或水基流体作为压力介质。否则可导致设备过早磨损或损坏。
- 请勿在超出已标明最大液压的情况下使用该设备。
- 在实际压力超过最大工作压力的情况下，请勿调节安全阀。
- 不要延长手柄以减少泵压时所需的力。只用手泵压。
- 请勿使用带有额定压力低于泵的最大工作压力的附件的泵。
- 请使用压力表监测出油口压力。
- 在为液压系统加压前，确保已从液压系统中排除所有空气。
- 防止在意外的压力释放（例如，通过使用锁紧螺母）下强制使工件（例如轴承、齿轮或类似物件）弹出。
- 请勿使用破损软管。连接软管时，请避免弯折和扭结。
弯折和扭结会损坏软管内部，最终导致过早失效。
对破损软管施压，可能导致其破裂。
- 请勿通过软管或联轴器提升设备。
- 请遵循当地的安全法规。

- 应由合格的液压技术人员或 SKF 修理中心来维护设备。
- 使用原装的 SKF 部件来更换磨损或损坏的部件。

符合欧盟相关产品条例的声明

我们，SKF 维护产品，Meidoornkade 14，3992 AE Houten 荷兰 全权负责并申明在所示使用说明书中所描述的产品，符合下列“系列”指令要求：
机械产品指令 2006/42/EC
并遵从以下标准：
EN-ISO 12100:2010, EN-ISO 4413

Houten, 荷兰, 2019年10月

Gondová



Mrs. Andrea Gondová
质量与合规经理

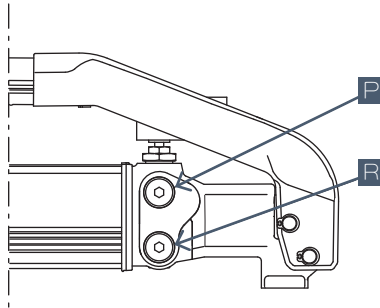
1. 应用

SKF液压泵728619 E为两级液压泵。工作在转换压强下时，它有高的打压流量（每次打压 20cm^3 ），工作在转换压强之上时，打压流量自动降到 1 cm^3 /每次打压。

该液压泵标配有3 米长的高压油管，用于连接液压泵与工件注油孔。在高压油管的一端有一个快速耦合接头，以便于连接到液压泵，在高压油管的另一端有一个G $\frac{1}{4}$ 的快速接头用于连接到工件注油点。

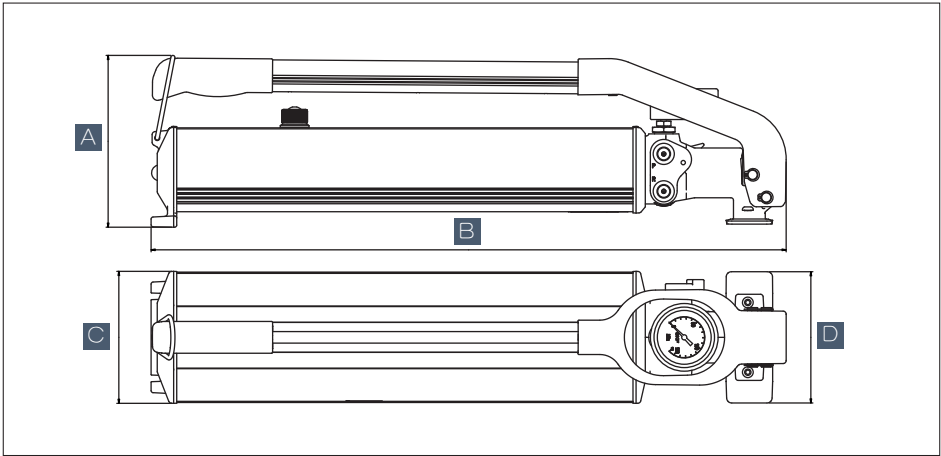
该液压泵出厂时已装满了SKF安装油LHMF 300，此外还配备了一升这样的安装油。所有这些组件都装在一个结实的铁质工具箱里。

该液压泵有一个出油口（P）。它还有回油接头（R），以将油回流到油罐中。当油罐容量不够时，回油接头还可以外接油罐。卸压阀位于泵的顶端。该液压泵还有一个安全阀以防高压损坏液压泵。



2. 技术参数

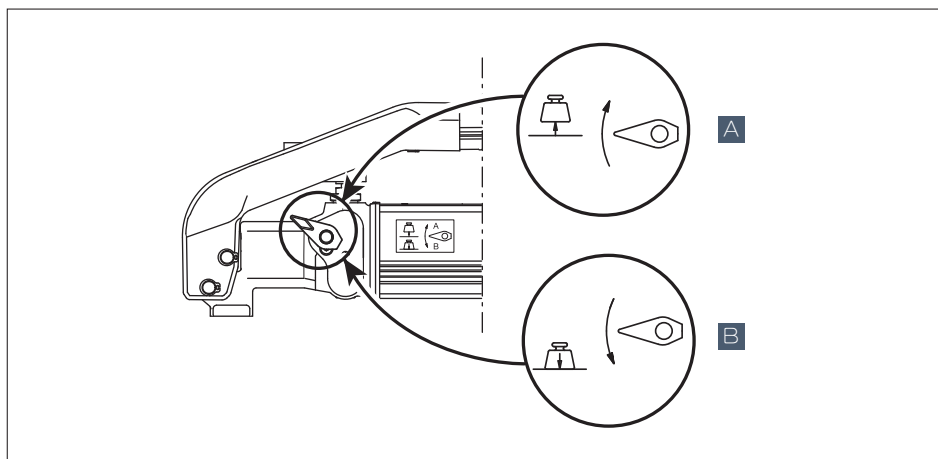
最大压强	150 MPa
每次流量	20 cm³ 以下 2,5 MPa 1 cm³ 以上 2,5 MPa
油罐容量	2 400 cm³
高压油管	3m, 带快速耦合接头
连接头	G 1/4 外螺纹或内螺纹
安装油粘度	20 °C时300 mm²/s
重量（已填充安装油）	11,4 kg
手柄压力	370 N
订货号	728619 E



尺寸	mm
A	170
B	620
C	130
D	128

3. 操作说明

- 松开液压泵油罐后面的油箱盖，检查油位，保证有足够的液压油完成工作。使用SKF液压法安装轴承或使用SKF液压螺母时，建议用工作温度下粘度为300 mm²/s左右的安装油；拆卸轴承时，建议使用工作温度下粘度为900 mm²/s左右的拆卸油。
- 保持液压泵处于水平位置或略微前倾，加油时连续地往里倒。
- 将快速接头（G 1/4）拧到应用位置的注油孔上。
- 将高压油管耦合接头上的卡环轻微地向后拉，以将高压油管接到快速接头上。高压油管可以用同样的方式取下来。
- 将卸压阀向泵的方向旋转，不要太紧。卸压阀在泵的侧面。
- 持续泵压液压泵，直到达到应用所需的压强。最大压强为150 MPa，一旦达到这个压强，安全阀就会打开。
- 最后，打开卸压阀，让多余的油回流到油罐中。



- A. 泵压
B. 卸压

4. 保养

4.1 更换液压油

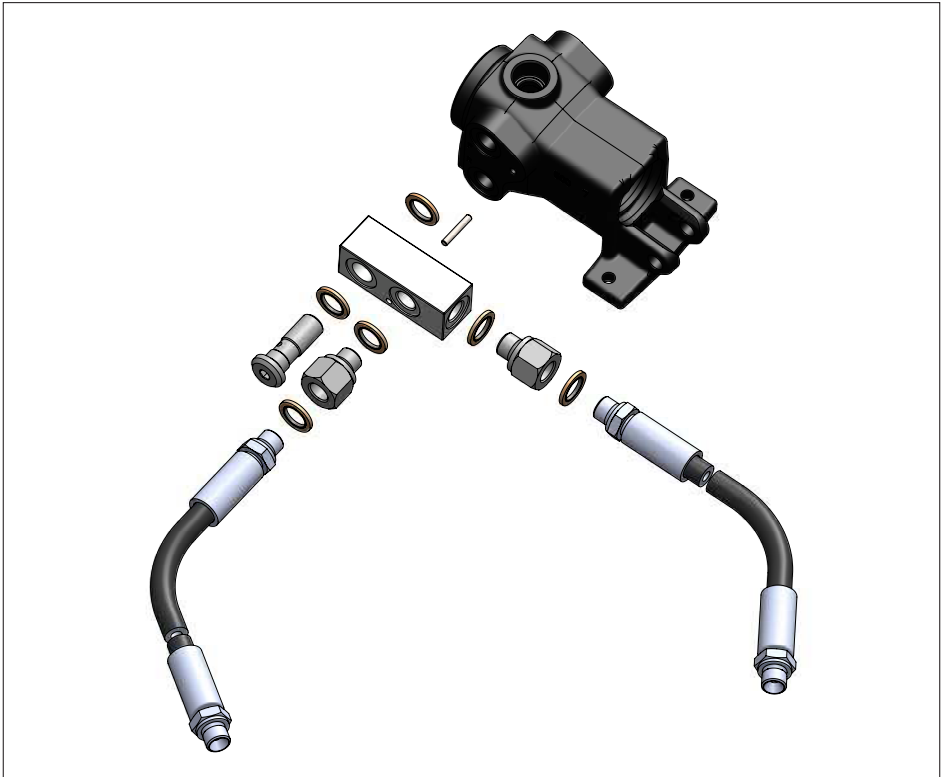
将液压泵放在平整的水平面上以填充油罐。取下油罐加油孔的螺栓，向油罐里装油直至油位到达注油口的底部，不要超过注油口的底部。油罐里过多的液压油可能引发设备故障。更换液压油或维修后，保证系统中没有空气聚集。在将高压油管接到注油点前必须进行排空检查，泵压数次从高压油管出来的油没有气泡即可。请只使用推荐的清洁液压油，如SKF 的LHMF 300 或 LHDF 900。

4.2 清洁

确保液压泵的清洁，防止灰尘和金属颗粒进入泵内引起磨损。

4.3 备件

订货号	描述
728619 E-1	液压泵
728619 E-3	压力表
728619 E-4	双出油口接头
728619 E-7	维修包
728619 E-9	卸压阀组件
729831 A	快速耦合接头
729832 A	快速接头
729834	高压油管，长3 m
LHMF 300/5	安装油（5 升，20 °C时粘度为300mm ² /s）
LHDF 900/5	拆卸油（5 升，20 °C时粘度为900mm ² /s）



SKF 728619 E4，双出油口接头

本出版物内容的著作权归出版者所有且未经事先书面许可不得被复制（甚至引用）。我们已采取了一切注意措施以确定本出版物包含的信息准确无误，但我们不对因使用此等信息而产生的任何损失或损害承担任何责任，不论此等责任是直接、间接或附随性的。



更詳細的可靠度系統產品資訊請連絡：

新豐貿易股份有限公司

電話：02-2586-5638

傳真：02-2586-4593

地址：103台北市大同區重慶北路三段215號

信箱：hht@hht.tw

網址：WWW.HHT.TW

